




# DiveBoost™ Kit for Nomad Mini Assembly Instructions

The purpose of the DiveBoost Kit is to allow users to extend run time with Nomad Mini by connecting multiple batteries in parallel. The DiveBoost electronics are required for this to work using lithium ion batteries. The DiveBoost is not simply a wye connector - do NOT try to reproduce.

- The DiveBoost Kit is NOT compatible with Nemo. Only use this DiveBoost Kit with Nomad Mini.
- Read and understand the Nomad Mini Owner's-Users Manual prior to use. ([diveblu3.com/manuals](http://diveblu3.com/manuals))
- Connect all open battery connectors to fully charged batteries during use. For example, if you want to use only one battery but the DiveBoost Kit is already installed (meaning two connectors are open) then you should remove the DiveBoost Kit to use just one battery.
- Make sure all connectors have the o-ring installed and are fully tightened.
- Use all fully charged batteries. Avoid using batteries of different charge levels.
- Use up to two DiveBoost Kits at once. Nomad Mini has been tested to operate with a maximum of three batteries at once.
- Whenever you remove a battery, immediately install a dust cap onto the male battery connector to prevent debris from disrupting the o-ring seal.

## Included:

 (4) #6x2.25" Philips Head Screws



DiveBoost Battery Compartment and Electronics

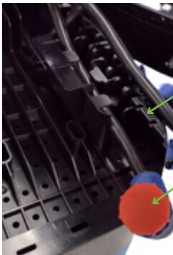
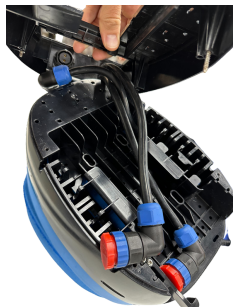
## Not Included:



Philips Head Screwdriver

## Installation:

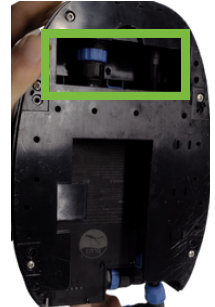
(1) Connect battery cable from Nomad Mini to the female connector on DiveBoost electronics. Run the Nomad Mini battery cable in between the two cables from the DiveBoost. Press the upper battery cable into the channel in Nomad Mini.



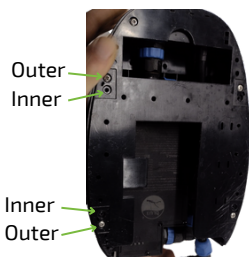
Upper Cable

Dust Cap

(3) Avoid kinking the battery cables while inserting the batteries by using your fingers to push excess cable into the cutout section.



(2) Install screws into bottom of Nomad Mini. There are two sets of screwholes. The outside set is for the first DiveBoost, and the inner screwholes would be for a second DiveBoost.



(4) Install fully charged batteries into all of the open male connectors. Ensure all connectors have o-rings in place and are fully tightened. Tighten by hand - do NOT use the connector wrench to tighten. The connector wrench can be used to help loosen a tight connector.

(5) Whenever you remove a battery, immediately install a dust cap onto the male battery connector to prevent debris from disrupting the o-ring seal.

Any questions?

Email [support@diveblu3.com](mailto:support@diveblu3.com)