



Hose Patch Kit Instructions

The purpose of the Hose Patch Kit is to seal a minor leak in the air hose of Nomad or Nomad Mini (NOT a Nemo hose.) The Hose Patch is NOT intended as a permanent solution. Use the Hose Patch until you can send your unit in for a hose replacement service. The Hose Patch requires the clamping trays to be fully engaged with no gap in order to work. Do NOT try to use only the flex tape, which will not seal.

Key Points to Remember:

- Read and understand these instructions prior to use. (diveblu3.com/manuals)
- Drive all screws while pushing clamp together and aligning the triangle keys.
- Do NOT remove the Hose Patch Kit once it is installed.
- When pressing the purge button to test the hose, keep Smart Reg firmly pressed against the plug.
- Be cautious during use and observe the Hose Patch, as it is a temporary solution and is only intended for use in 1-2 dives.
- Press the purge button to clear any excess water out of hose before beginning.

Included:



(4) 6X0.75" Philips Head #2
Self-Threading Screws



Clamping Trays



2" x 3" Flex Tape

4 Zip ties



Silicone Cuff Plug



Does not include: #2 Philips
Head Screwdriver

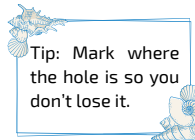
(1) To remove the Smart Reg from the cuff, turn off the knob, cut the zip tie, being careful not to damage the cuff or your hands, then gently **pull the Smart Reg out up to 2"**.



2) Slip the silicone plug around the end of the sensor cable. Insert the plug into the cuff. Press the Smart Reg against it to get a proper seal, and then **secure it with two zip ties**.



(3) Identify where the hole in the hose is by placing the hose in water, and while keeping the Smart Reg firmly pressed against the plug, **press the purge button**.



(4) Remove hose from water. Dry the area where the patch kit will be applied.

(5) Remove plastic non-stick film from flex tape and center the shortest side of the flex tape on the leak location.



(6) Wrap flex tape securely around the leak.



Any questions?
Email
support@diveblu3.com

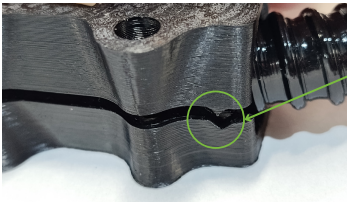


(7) Set hose inside clamping tray, and press firmly into place, ensuring that the hose helix aligns with the grooves on the clamping tray.



Note: The helix does not need to match perfectly.

(8) Press the other clamping tray on top, **ensuring** the triangle key notch aligns correctly.



Align triangle key

(9) Drive the first two screws into the holes and flip over to drive the last two screws. **Evenly and fully engage the clamp.** Do NOT fully tighten just one screw at a time, as this will cause the clamp to be unbalanced.



Note: Make sure there are no gaps between the clamping trays.



(10) Pressurize the hose to test for a leak by **keeping the Smart Reg firmly pressed** against the plug and pressing the purge button to **look for a stream of bubbles coming out of the hose patch.**



(11) Turn off Smart Reg knob. Then cut the zipties off at the head. Slowly remove the plug, being **careful to direct the opening away from you as there will be some pressure in the hose.**



(12) Reattach the Smart Reg completely into the cuff. It may be necessary to stretch the entire length of the hose from the unit to the cuff, so that the sensor cord gets pulled back into the hose, if the Smart Reg was pulled out further than 3" in Step 1.



(13) Secure the cuff with a zip tie as shown below (start by sliding tail end side in the space between cuff and Smart Reg). Snip off excess. When diving, **observe the Hose Patch for leaks with caution.**



Any questions?
Email
support@diveblu3.com